

Well Intervention

Heavy Duty Wireline Fishing

Combined innovative equipment and expert knowledge to optimise fishing operations.

Our heavy duty wireline fishing (HDWF) services remove a wide range of wellbore obstructions, including stuck flow-control devices, slickline and braided cables to get your wells back up and running.

The HDWF solution's small footprint, removes the need for a workover, providing a more efficient and cost effective alternative to larger coil tubing intervention approaches.

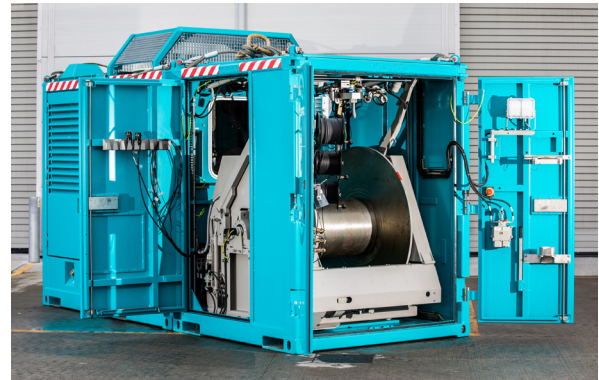
With our bespoke tool package we can enhance and optimise your wells performance whilst maximising service delivery. By incorporating high strength Dyform cable and innovative optimised toolstrings to deliver extremely high-impact forces. We work with two key pioneering companies, Limar and Oilenco, to also provide design and manufacturing support. The reliability of deploying our downhole tools allows you to sustain production, restore your integrity and enhance your well performance.

Our in-house specialists have more than 30 years' experience, are trained to a high HDWF standard and support an array of equipment to minimise well downtime. We can quickly retrieve any fish in any wellbore environment enabling you to:

- Enhance production – reinstatement of production wells which have been shut-in or choked back due to a fish in the wellbore
- Plug and Abandonment (P&A) – assists in the removal of restrictions/barriers to achieve optimal P&A strategies

Features and benefits

- Bespoke 2 1/8" specific connection – first of its kind
- High impact 2 7/8" toolstring for ultra-heavy fishing operations
- 33% increase in strength compared to 1-7/8" & 2-1/2" LQK (QLS) connection
- Titanium Locking Plate with fivefold increase in strength along with a 40% comparative weight reduction of existing plates
- Lateral support sleeve envelopes the fish neck, protecting it whilst reducing lateral force and sideward movement on connection during jarring
- Specifically engineered bottom hole assemblies to suit HD applications
- Surface package including Quad Ram BOP's and Ezi-Shear Seal assemblies
- Multi Split B units provides compact footprint for both onshore and offshore applications. The unit's modular design offers an array of operational flexibility, especially relevant on space or weight constrained platforms. All units come equipped with high strength 5/16" Dyform cable and in-cab Line Minder technology offering up both digital and mechanical depth/weight redundancy



- Extensive in-house engineering support to enable detailed job design and project management
- Surface package includes Quad Ram BOP's and Ezi-Shear Seal assemblies
- Eliminates the need for a costly workover
- Flexible, efficient and cost-effective solutions
- Low/small footprint – minimising our environmental impact
- High impact/high performance
- Dedicated equipment
- Mobilisation flexibility
- Highly trained, competent personnel