

Well Flow Management

Well Testing | Data Services

Data to Desk

The Expro Data to Desk capability allows real time data to be shared via a web browser on multiple mobile data platforms. This facility allows users to access their data, at the well site, at their desk or remotely at any location thus ensuring informed and timely decisions are made based on real time data.

Data to Desk (D2D) is a vital aid when evaluating well performance, supporting the decision making process and reducing or extending rig time, especially where well sites are difficult to access for key personnel.

Expro customers have the full suite of tools necessary to view and export real time data through the web browser via a unique and secure login protocol.

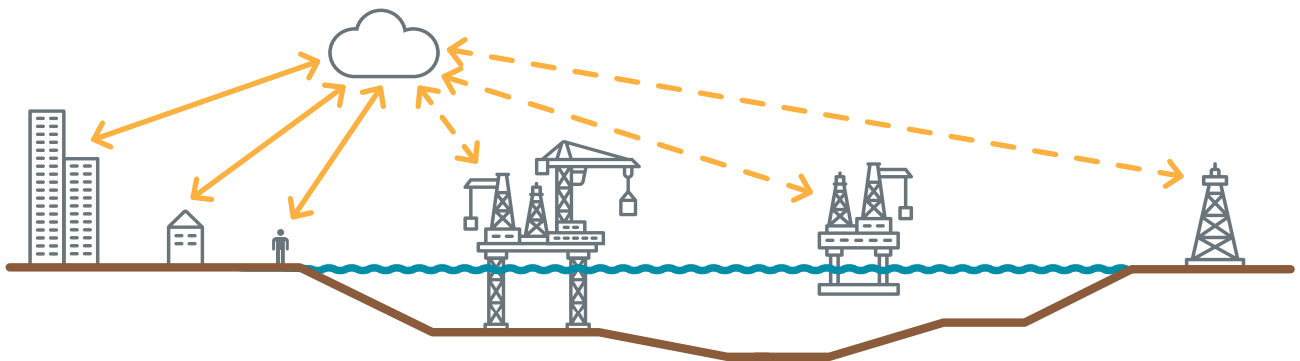
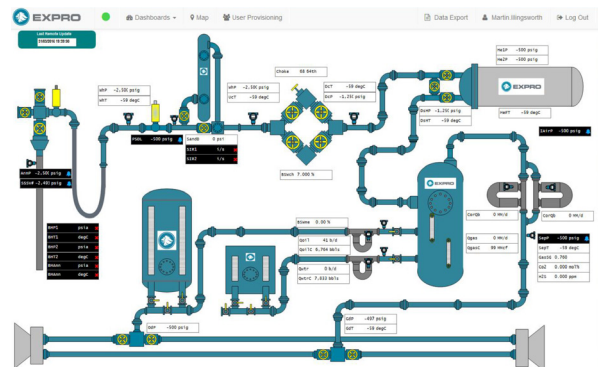
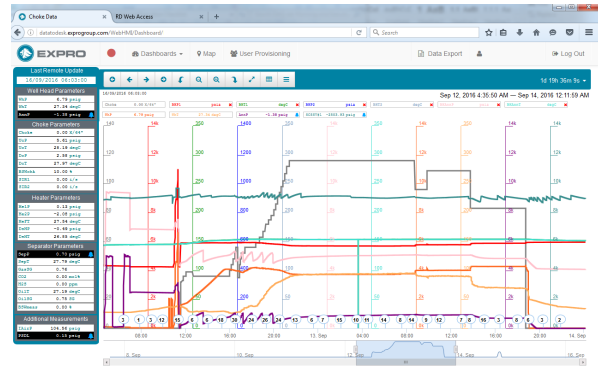
D2D has been incorporated into the EDGE data acquisition system.

Applications

- Well Testing
- Clean Up/Flow Backs
- Production Testing
- Production Surveillance
- Production Optimization
- Platform Monitoring

Features and benefits

- Remote access by multiple users
- Real time data anywhere
- Field data viewing and exporting
- Speeds up the decision making process
- Reduces uncertainties
- Secure data transfer to dedicated server





Well Flow Management

Well Testing | Data Services

Data to Desk



This page is intentionally blank