

Expro Excellence

Expro designs bespoke package in Gulf of Mexico

Well Testing



Objectives and background

- The gas pipeline in the Gulf of Mexico was approximately 41 miles long, 14" pipeline originating at the TLP and ending at a fixed platform commissioned 20+ years earlier. The pipeline was damaged during a hurricane by the anchors of a rig that broke free of its mooring lines
- The pipeline was repaired with a jumper line in 2006. However, due to pigging issues during re-commissioning, it had not been pigged since
- With increasing flow assurance issues from asphaltenes and lack of in-line inspection, a plan was developed to modify the line and make it piggable

Expro Excellence

- Initially the operator was working with another company to design a temporary package that would process instantaneous rates of up to 50,000 bpd to allow for a specific pig velocity after the pipeline modification
- The company was not able to deliver the solution, and the operator contacted Expro to design a bespoke solution
- Common well test equipment designed to facilitate these rates would not fit on the unmanned platform. Expro had to design a more compact package
- Expro's engineering team designed the package using multiple smaller vessels and modified existing customer equipment on location to meet the requirements of this project
- Expro's local experience with high rate offshore well testing was able to translate into a solution for this midstream pipeline application and still execute at a high level

Value to the client

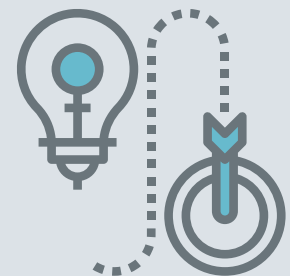
- Expro from planning through to execution and rigdown maintained great communication and worked together as a team, this project serves as an example of what can be accomplished safely when everyone works together
- The re-designed bespoke package accommodated for slugging and solids while improving separation efficiency
- Working diligently with the customers, Expro designed a package that would maximise production capacity in small and segregated spaces. The requirements for light weight and small footprint equipment capable of processing high flow rates is not common for well testing or pipeline service companies in the area. Expro worked with several vendors to provide the best available equipment in order to deliver the optimal solution



This was a very demanding job, and Expro met every milestone and faced every challenge with a positive attitude. Great job!

Client

Innovative solution



Contact

For further information please contact:
welltesting@exprogroup.com
or visit
exprogroup.com/welltesting