

Expro Excellence

Expro delivers successful heavy duty fishing operation

Well Intervention



Customer challenges

- The customer's well was shut in due to multiple tubing leaks above and below the injection valve which was currently stuck in the sliding side door at 13,743ft with a 28 degree deviation
- Due to the volume and position of the leaks it was necessary to remove the injection valve and isolate the well by setting a plug above the reservoir section in the 7" liner and placing a cement column above it
- Previous attempts with 7/32" braided line were unsuccessful
- The scope of work was split into two phases which included Expro's Slickline/Braided line, Cased Hole memory and our E-line services

Objectives

Phase 1

- Rig up and test 5/16" braided line wireline equipment
- Drift well to BB packer c/w Injection valve +/- 13,743ft
- RIH and recover BB packer c/w injection valve from SSD +/- 13,743ft
- Carry out drift run to +/- 14,000ft

Phase 2

- Rig down Braided line and rig up E-Line
- RIH with E-Line and set cement retainer plug +/- 14,000ft
- Inflow test cement retainer plug
- Multiple RIH with E-Line with 2 1/8" bailer and dump sufficient volume of cement above the cement retainer at 14,000ft. Eight runs for a 20ft cement plug
- Wait on cement to cure
- RIH with E-Line drift to tag top of cement plug and confirm plug height
- Perform pressure test and inflow test to confirm plug integrity
- Isolate well
- Rig down equipment and chocks lines

Expro Excellence

- Expro contributed to the overall project objectives by providing both a safe, reliable service quality and a timely delivery. Our extensive intervention experience proved invaluable during the heavy duty fishing operation

- Expro's heavy duty fishing operations utilised our HD toolstrings and tooling, which incorporated the new quick connection system (LQK-HD), which is an enhanced version of the standard QLS system. This HD connection has a 33% increase in strength compared to the standard LQK (QLS) connections and it also has a lateral sleeve, which helps to reduce sideward movement on the connection during jarring
- Our Expro HD fishing tool package was mobilised with our comprehensive suite of bottom hole assembly (BHA) tools such as HD pulling tools, releasable spears, overshot magnets, wire finders, grabs and various other fishing relating tools. The new Limar toolstrings are capable of producing extremely high impact forces of over 150,000lbs with the 2 1/8" string, and up to 225,000lbs with the 2 7/8" string (produced in a test environment)
- Our step-by-step work instructions were issued by the customer regarding toolstring selection and settings prior to commencement of operations at various stages throughout the operation

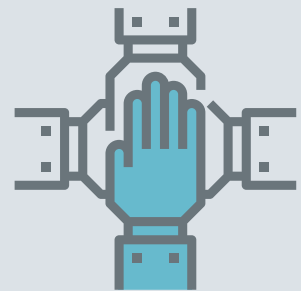
Value to the client

- With a dedicated customer operations supervisor at Expro and a dedicated desk engineer in the customer's office with over 35 years' experience we were available to advise, plan and ensure all issues and questions were resolved throughout the project
- A heavy duty fishing workshop container was mobilised to the customer's location with a complete suite of HD tooling and bottom hole assembly tools to cover all fishing scenarios
- Expro's fishing supervisor had extensive HD tooling experience and was mobilised for the duration of the project
- Meeting the client objective meant the reservoir could be isolated ensuring there was no longer an integrity risk to the asset

Objective outcome

- Phase #1 objective was successfully completed within four days, working the Expro HD toolstring and retrieving the BB Packer as per program and Expro work instructions
- Phase #2 was also completed as per program

Partnership



Bespoke solution



Contact

For further information please contact:
wellintervention@exprogroup.com
 or visit
exprogroup.com/wellintervention