

## Expro Excellence

# Expro supports in the completion of P&A campaign

## Well Intervention



### Objectives and background

- The customer was undertaking a field plug and abandonment (P&A) project which required cement evaluation services to establish the well integrity and top of cement as part of the P&A campaign
- The evaluation of the cement condition and casing integrity was critical for both the operational and the cost of the project. This data helped form the basis of evaluating whether the P&A required a perforation or re-cementing
- Two integrated project management companies awarded Expro the scope of providing the E-line package with correlation and cement evaluation services to support their overall integrated P&A scope

### Expro Excellence

- Expro supplied the E-line logging equipment and personnel for real time cement evaluation including ultrasonic bond logging and GR-CCL correlation for other related services
- Expro delivered our equipment and personnel in a short time frame to meet the customer's mobilisation dates for both of their projects
- Our cement evaluation reports were submitted in a timely manner for the customer enabling immediate decisions to be made
- Expro exceeded expectations not only in supplying the E-line but also on slickline work scope by utilising the combo unit with both E-line and slickline capability in the same set up

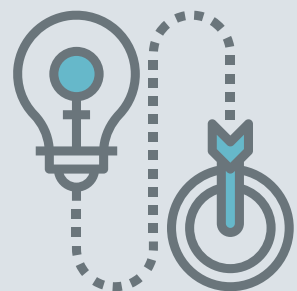
### Value to the client

- The customer was able to take remedial zonal isolation actions based on the cement evaluation services and on the timely report after each well analysis
- The customer valued the support Expro provided in the scope of this project and in the completion of the thirteen well plug and abandonment (P&A) for each of these projects without any safety or quality issues
- Both projects were completed in a timely manner. Our E-line unit was lightweight and had a smaller footprint with a dual drum combo slickline and E-line capability for any application of slickline during the campaign. Expro were able to provide both the E-line and slickline capability

### Fast track



### Innovative solution



### Contact

For further information please contact:  
[wellintervention@exprogroup.com](mailto:wellintervention@exprogroup.com)  
 or visit  
[exprogroup.com/wellintervention](http://exprogroup.com/wellintervention)