

Expro Excellence

CoilHose technology delivers a successful solution for unloading a subsea well

Well Intervention



Objectives and background

- The customer had a requirement to unload a completion fluid column to reduce the hydrostatic head to enable the well to flow prior to commencing with a well test operation
- The customer selected CoilHose as the preferred solution due to the efficiencies around rapid deployment, operational timings and a smaller footprint of equipment
- Limitations around available deck space



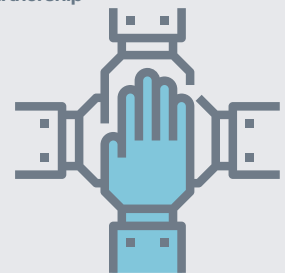
Expro Excellence

- Expro proposed CoilHose as an alternative to Coil Tubing to unload the well using nitrogen injection through the 3/4" OD CoilHose Light Well Circulation system
- Expro's solution offered a multi skilled approach between both CoilHose and Slickline services. This hybrid working model offered rapid rig up and deployment timings and the flexibility to have CoilHose and Slickline support which greatly reduced the mobilization, rig up times and crew size
- The CoilHose package was prepared, tested and rigged up off critical rig time, which resulted in significant cost savings to the client
- A collaborative approach in developing the well program with the customer
- Key interfaces with the Semi Sub rig and other suppliers were successfully managed

Value to the client

- Expro delivery met the client's expectation with the well unloading as per the simulations conducted
- Multiskilled crew supporting both CoilHose and Slickline services which resulted in reduced crew size
- 30% cost/time saving vs Coil Tubing due to the rapid deployment of the CoilHose system, resulting in a like for like carbon reduction in operations
- All the programme objectives were achieved
- Excellent cooperation and collaboration between Expro and the client during the project
- This project demonstrated our collaborative approach with two product lines supporting one project operation

Partnership



Cost saving



Contact

For further information please contact:
wellintervention@expro.com
 or visit
expro.com | Well Intervention