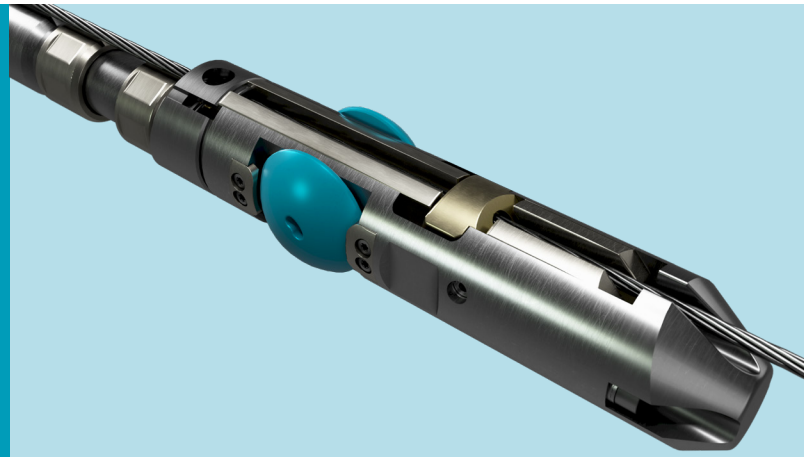


Expro Excellence

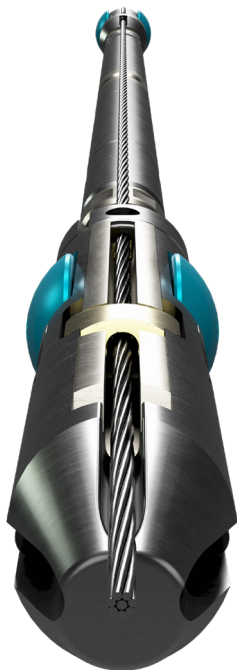
# Cut your NPT and wire with the Kinley K2-Cutter

Well Intervention and Integrity



## Objectives and background

- During a rig based well abandonment program, a Slickline toolstring had become stuck in a tubing stump downhole
- After several hours of jarring, it was decided that recovering the wire in a controlled manner was the safest option versus continuing to jar and risk a wire break at surface or at an unpredictable depth downhole
- Due the possibility of a cutter falling near the fish, a reliable method of crimping the cutter to the wire for recovery post-cut was required
- The rig was on Non-Productive Time (NPT) until a solution could be found for the customer



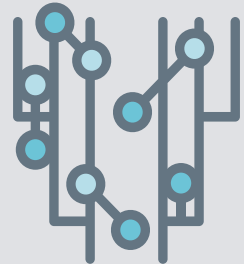
## Expro Excellence

- Expro's Kinley K2-Cutter was chosen due to the necessity for rapid deployment
- The Kinley K2-Cutter has no explosives, no hydraulics and no lithium batteries, so it is easily transportable to any location, onshore, offshore or internationally
- Explosive alternatives would have taken days to mobilize - the K2-Cutter was at the heliport within hours of the call-out
- Full on-site operational checks were performed including a pre-deployment test cut, with the tool being reset and ready for deployment within minutes
- The K2-Cutter's robust crimping mechanism ensures tool recovery with the cut wire

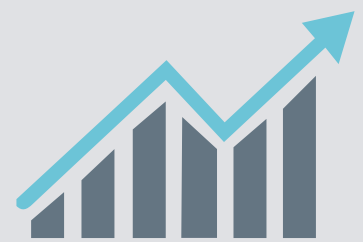
## Value to the client

- The K2-Cutter was deployed, a successful cut made at the rope socket and the tool crimped to the wire for recovery to surface
- The wire was successfully recovered in less than 12 hours from the time the decision was made to stop jarring
- The abandonment program was subsequently able to continue with minimal NPT

## Well integrity



## Increased productivity



## Contact

For further information please contact:  
[wellintervention@expro.com](mailto:wellintervention@expro.com)  
or visit  
[expro.com/wellintervention](https://expro.com/wellintervention)