

Expro Excellence

Expro significantly improves production through small footprint intervention

Well Intervention and Integrity



Objectives and background

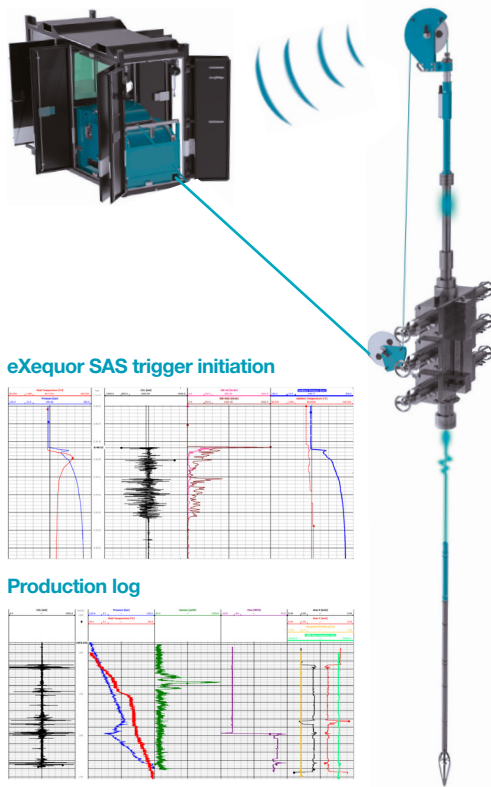
- Expro were approached by a customer to evaluate the tubing condition and enhance the production of a selection of wells
- A nature reserve and local communities were nearby which added to the sensitivity of this project
- Expro proposed our Slick-E-Line system which combines the capabilities of mechanical Slickline with the real time data acquisition and control capability of E-line

Expro Excellence

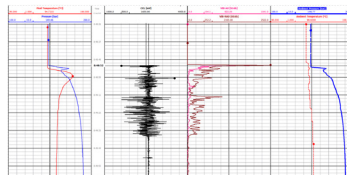
- Provision of Slick-E-Line (SEL) conveyed real time cased hole logging and proprietary eXequor. Safe Activation System (SAS) perforating service significantly reduced equipment and personnel requirements at the well site
- Pulse-Frac modeling was performed pre-job to determine optimal perforating charge configuration and to mitigate the risks associated with under-balanced perforating
- Expro successfully overcame the logistical challenges associated with the supply and transportation of explosives to Tanzania
- A four well logging and perforating campaign was successfully executed and resulted in a significant improvement of well productivity and evaluation of well integrity
- Multiple mechanical Slickline runs, which included heavy jarring, and real time case hole logging runs were made utilizing the SEL service
- Our tailored quick rig-up and rig-down footprint minimized any impact on the surrounding environment and communities

Value to the client

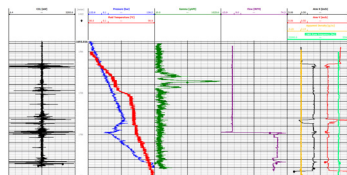
- This project resulted in a significant increase in well production
- The increase in production enabled cyclic peak gas demand to be managed more efficiently
- Successful evaluation of tubing condition enabled the planning of future remedial work to further extend the value of the assets



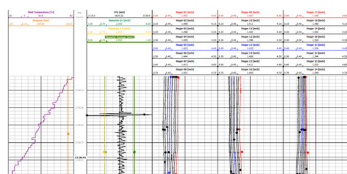
eXequor SAS trigger initiation



Production log



Multi-Finger Caliper log



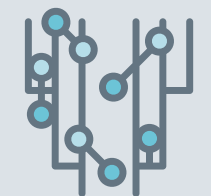
Cost saving



Production enhancement



Well integrity



Contact

For further information please contact:
wellintervention@expro.com
 or visit
expro.com/wellintervention