

/ Expro Excellence Well Intervention

Expro performs a world first for Total, performing oriented perforation on a permanent fibre optic completion



Objectives/background

- After a successful contract award in 2016, Expro has been providing E-line plug and perforation services for Total via Calfrac in the shale and tight gas fields in Argentina as part of their frac program
- Soon after the successful start-up and job execution, the service was extended to YPF and other customers in Argentina
- Early in 2018, Total contacted Expro to perform more challenging work in relation to the perforation of wells with permanent fibre completion which had not been undertaken previously

Expro Excellence

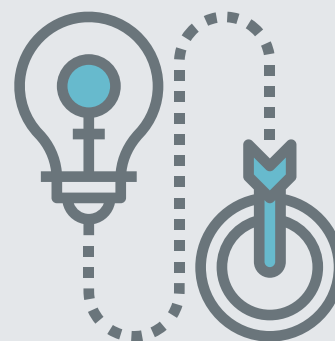
- This was a world first for Total, a great deal of time and preparation (8 months) was spent studying and working together with the customer, providers and business partners detailing each stage of the job to be performed
- Expro was the first company to use E-line to map fibre orientation along the well and successfully performed 16 oriented pump down plug and perforation stages in Argentina

- Excellent communication between the customer, fibre provider, frac team and Expro incorporating the detailed job planning and thorough job preparation contributed to the success of this project
- First live hydraulic fracture and production evaluation through permanent fibre optic completion wells

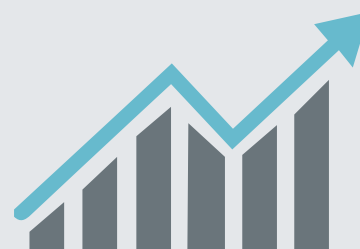
Value to client

- The use of optical fibre behind casings was the best solution for monitoring real-time well completions and production stages
- Our customer was able to perform the orienting perforation for their wells with permanent fibre completion which increased the frac efficiency as well as production
- This technology enabled the customer to understand stimulation effectiveness, assess to new completion technologies, and ultimately allowing them to evaluate which zones are the most productive
- Minimised risk and maximised production rates for the customer

Innovative solution



Increased Productivity



Contact

For further information, please contact:

Wellintervention@exprogroup.com

Or visit:

www.exprogroup.com/wellintervention