

Expro Excellence

Expro awarded first fully integrated service package in Mexico – on a critical national project

Well Testing



Customer challenges

- A major Mexican oil producer was preparing to perform complex appraisal well tests on new exploration fields as part of a national strategy to increase reserves. The well operations were paramount to providing fundamental information for the assessment of newly discovered fields
- Expro was awarded their first Mexican contract to provide a fully integrated service package for this offshore exploration and appraisal campaign; including: Drill Stem Testing, Surface Well Testing and Fluids (sampling analysis)
- While Expro had previously provided Subsea Landing String services to the NOC; our first challenge was to demonstrate our capabilities to secure the customer's acceptance of Expro as a multi service provider for the entire project
- The second challenge was in mobilising and preparing our equipment to provide these services in Mexico for the first time, in short order

Expro Excellence

- Expro worked very closely with the customer to demonstrate our ability to provide a fully integrated solution, supported by:
 - A multidisciplinary, experienced team of highly committed local employees
 - Outstanding technical assistance from our global product lines and our engineering hubs in the US, UK and Brazil
 - Collaborative and seamless management of relationships and interfaces between our customer, suppliers and partners
- During the job design phase, we had intensive interaction between both our operational and engineering team to evaluate several numerical models and to analyse extreme conditions to design the most efficient set up, selection and preparation of equipment for the project
- Expro has now established itself in Mexico as a premium provider of fully integrated services of the highest quality service in the region

Value to the client

- Expro saved the customer in excess of 15 hours rig time (approximately \$150k)
- One of the fastest DST RIH operations the customer had ever experienced
- 98.6% efficiency
- Zero environmental impact
- The customer acquired high quality data for reservoir characterisation

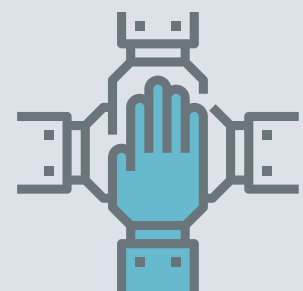
Project highlights

- One HPHT well saw Expro's downhole tools successfully operated below the rotary table exposed to Bottom Hole temperatures around 168°C (334°F) and downhole pressures above 15,000psi with a high concentration of H₂s and Co₂, immersed in heavy fluid mud conditions
- Originally designed and planned for immersion at these conditions for 10 days; weather and external factors resulted in the DST tools being downhole for almost 50 days – after which they functioned flawlessly to accomplish all objectives!
- There was a considerable reduction in DST rig up time as we sent pre-assembled and pre-torqued sections from onshore
- Our 15K SWT equipment was exposed to extended and harsh conditions; with no surface leaks and the successful acquisition of high quality, critical reservoir data
- The customer rated Expro's Job Performance score at 100%

Cost saving



Integrated approach



Contact

For further information please contact:
welltesting@exprogroup.com
 or visit
exprogroup.com/welltesting