

Expro Excellence

Innovative approach to well killing operations results in 50% cost saving

Acumen



Objectives and background

- An operator performing well killing operations was identifying the optimum “kill rate” by pumping kill fluid at different flow rates and monitoring the surface returns
- By using this trial and error method, it consumed both time and costs for the customer, as the pumping unit needed to be on the wellsite for a prolonged duration
- The customer had a significant amount of waste in kill fluid
- The main challenge was the customer had no real-time visibility on the kill fluid levels and they required an accurate determination to indicate if the killing operation was a success

Expro Excellence

- Expro proposed an innovative approach of utilising a non-intrusive methodology to measure the fluid levels in real-time
- Expro deployed equipment and field personnel at short notice to support the well killing operations
- Instant kill fluid level readings were provided at the wellsite after each pumping cycle

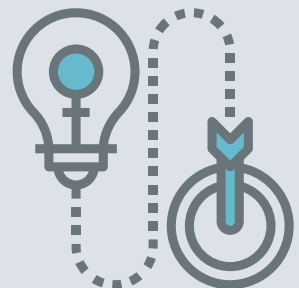
Value to the client

- The customer received real-time monitoring of kill fluid levels, for one of the wells, Expro measured accurate kill fluid levels up to 12Mkb
- The customer used this insight to optimise the kill rate by decreasing the pump rate from 8m³/h to 4m³/h
- The customer could keep the well overbalanced, resulting in a 50% cost saving compared with conventional methods

Cost saving



Innovative solution



Contact

For further information please contact:
acumen@exprogroup.com
or visit
exprogroup.com/acumen