

## Expro Excellence

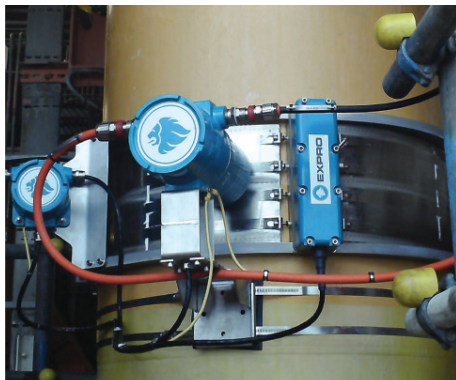
# Sonar surveillance for large diameter trunk lines successfully support Woodside Petroleum's challenge to increase production

Acumen



### Customer challenges

- Woodside Petroleum operates the North West Shelf Project facilities, which constitute Australia's largest oil and gas resource development, accounting for more than 40% of Australia's oil and gas production
- The North West Shelf Project has two trunk lines connecting four offshore platforms to the onshore processing facility. Woodside wanted to increase production from the field but were restricted by the flow capacity in one of the trunk lines



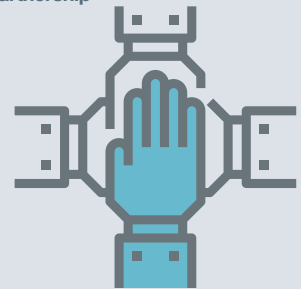
### Expro Excellence

- ActiveSONAR™ flow meter applied to trunk line 30" in diameter and 1" thick, precluding the use of conventional clamp on meters
- Mobilised quickly, with no process shutdown ActiveSONAR™ meter measured the full range of flows, up to approximately one billion standard cubic feet per day

### Value to the client

- The client's initial estimate of the liquid ratio was 10bbls/MMscf, however the tracer provided a LGR repeatable result of 2bbls/MMscf, with no water present
- Technique used to correct gas rates and determine liquid content, allowing the client to update PVT and calibrate existing inline metering for ongoing surveillance and production optimisation
- Non-intrusive technology to minimise cost with no production losses

### Partnership



### Cost effective



### Contact

For further information please contact:  
[acumen@exprogroup.com](mailto:acumen@exprogroup.com)  
 or visit  
[exprogroup.com/acumen](http://exprogroup.com/acumen)