

Expro Excellence

Expro delivers conductor pre-installation for three remote Geothermal wells

Well Construction | Frank's TRS



Objectives and background

- The client needed to install three 30" conductor strings to depths below the shallow water flows at 26' in Bouillante, Guadeloupe, a remote island in the Caribbean, where conventional drill in methods would not work.
- The main challenge with driving the conductor to the desired penetration depths on land was utilizing a construction crane prior to the drill rig arriving
- Another challenge was the coordination of remote logistics and mobilizing the necessary equipment and personnel to a location with limited drilling infrastructure

Expro Excellence

- Expro utilized a specially designed land frame to support the conductor vertically during initial operation
- Expro's personnel provided expert knowledge to the customer throughout the project
- Expro provided the welded pipe, fabricated drive shoes for each of the three planned wells and welding support
- All equipment was mobilized from our Lafayette office along with experienced personnel
- Expro installed the three conductor strings at 92', 76' and 34' respectively
- Expro successfully delivered the project with limited access to logistics and infrastructure

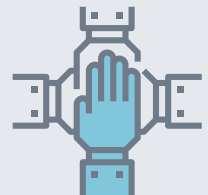
Value to the client

- By utilizing our 60+ years of conductor installation methods we were able to safely install the three wells offline prior to the drilling rig mobilization
- Utilizing the customer's soil boring data, we performed a drive prediction analysis to determine the hammer size and the projected penetration based on pile geometry
- Expro provided on the spot advice to the client to improve their operations

Bespoke solution



Partnership



Quality standard



Contact

For further information please contact:
frankstrs@expro.com
 or visit
expro.com/frankstrs