

Expro Excellence

Expro's ArticuLock® saves 14 days of rig time in offshore South Africa

Well Construction | Tubular Running Services



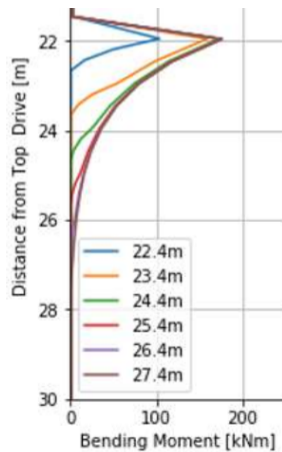
Objectives and background

- Auxiliary operation not possible with environmental loading subjecting bending load on the system during critical path operations on main. 24 day tophole operation on previous well

Expro Excellence

- Expro's ArticuLock® was used to de-couple the fixed MODU from the hanging conductors and surface strings, enabling dual operations

ArticuLock® placement



Value to the client

- Up to 317MT of surface casing and landing string suspended beneath ArticuLock® for 75hrs with 4.3 knots of current and up to 53 of significant wave length
- 283m³ of cement slurry pumped through ArticuLock®
- 15kNm of torque to release CART
- Saved 14 days from top hole operations
- Removed the requirement of independent drift running of tubulars and BHA's



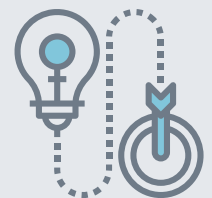
Cost saving



Reduction of rig time



Innovative solution



Contact

For further information please contact:
wellconstruction@expro.com
 or visit
expro.com | Tubular Running Services