

Expro Excellence  
**SeaCure<sup>®</sup> enables clinical surface casing cement placement and green cement casing pressure test**  
 Well Construction | Cementing Technologies

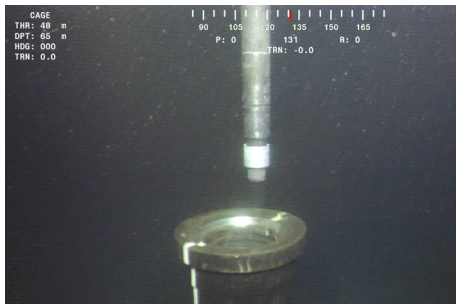


**Objectives and background**

- Our customer was looking to get cement back to the seabed and remove all risks associated with pressure testing casing against channeled displacement fluid through thixotropic cement in shoe track. The customer also wanted to mitigate against the risk of a cement patio around WH

**Expro Excellence**

- Expro provided the clinical execution of our SeaCure<sup>®</sup> cementing service, delivering low risk, high value cementing operations and casing hydraulic integrity solutions



**Value to the client**

- Expro brought cement back to the seabed
- Solid casing pressure test after the cement job before BOP installation
- We drilled the SeaCure<sup>®</sup> compatible shoe out in ten minutes
- No mud related conditioning time or cost for cement contamination
- We were able to bit drill to Total Depth (TD) 87m (285ft) with no issues
- No Bottom Hole Assembly (BHA) failures in the next section

**Quality standard**



**Cost saving**



**Contact**

For further information please contact:  
[cementing@expro.com](mailto:cementing@expro.com)  
 or visit  
[expro.com](http://expro.com) | Cementing technologies