

Expro Excellence

# SeaCure<sup>®</sup>, QuikCure<sup>®</sup> and CoreCure<sup>®</sup> deliver optimized cementing solution offshore West Africa

Well Construction | Cementing Technologies



## Objectives and background

- Improve drill out of 20" shoetrack to mitigate risk of bit/BHA damage whilst also eliminating risk of CART seal leak and improving cement compressive strength development

## Expro Excellence

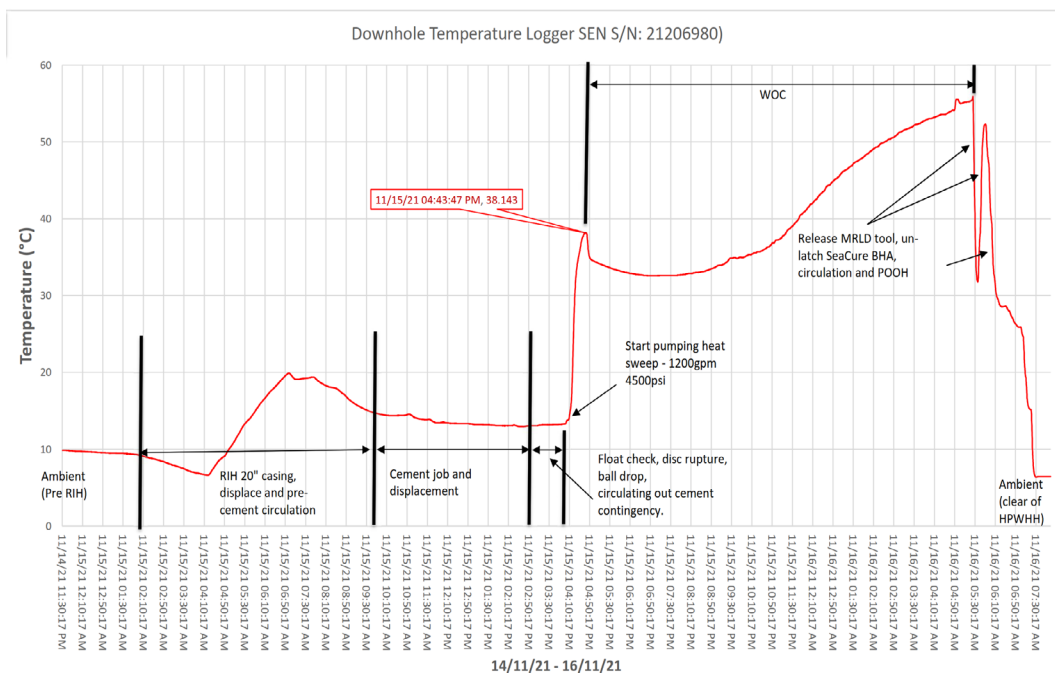
- SeaCure<sup>®</sup> provides an optimized shoetrack solution whilst moving the primary seal for the cement job to the shoe plus QuikCure<sup>®</sup> to optimize the time for the tail slurry to reach 100psi compressive strength

## Value to the client

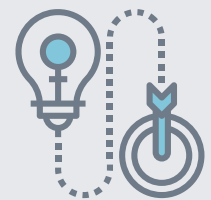
- Drilled out 20" shoe in 14 minutes with 17 1/2" bit ensuring TD was reached in one run and mitigating risk of Bit/BHA damage, whilst also mitigating the risk of introducing swarf into the wellbore
- Improved early compressive strength development of primary cement job
- CoreCure<sup>®</sup> sample confirming hard, good quality cement at the shoe
- Risk of CART seal leak eliminated with the SeaCure<sup>®</sup> BHA latched into the shoe and the running tool ball valve left open throughout operations
- Successful 3,300 psi surface casing pressure test conducted
- Successful LOT achieved

“Overall, we were pleased with the quality of service provided by DeltaTek both at the planning and during execution phases.”

Rufat Mammadbayli  
Senior Drilling Engineer



## Innovative solution



## Reduction of rig time

