

Expro Excellence

# SeaCureRS, CureCatcher® utilized to eliminate shoetrack sump drilling at well TD

Well Construction | Cementing Technologies



## Objectives and background

- Expro's client were optimizing liner shoetrack to avoid challenging drill out with small BHA at high temperature 199°C, (390°F) whilst enabling for optimal primary cementing

## Expro Excellence

- Expro were able to offer a combined solution with SeaCureRS Cementing and CureCatcher® which delivered a 1.2m (3.9ft) shoetrack and slurry mechanical separation to the shoe



## Value to the client

- Quality primary cement job with perfect CBL results
- Optimized 1.2m (3.9ft) shoetrack solution
- No clean out trips required
- Post cement job full wellbore circulation with work string already at TD



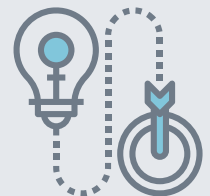
**“This saved us multiple days compared to our last well.”**

Client

Quality standard



Innovative solution



## Contact

For further information please contact:  
[cementing@expro.com](mailto:cementing@expro.com)  
or visit  
[expro.com](http://expro.com) | Cementing technologies