

Expro Excellence

# Old Dog, New Tricks – How 70-year-old technology still has a role to play in our energy future

## Sustainable Energy Solutions | Geothermal



### Objectives and background

- A Geothermal customer noticed increased iron counts from one of their producing wells, the well also had a known scale build up issue
- They had older fields with corrosion issues and wanted to be proactive with this issue in order to assure future production
- The wells were completed with 9 5/8" casing and 7" perforated or slotted liner below
- The scope was to run a Multi-Finger Caliper to log the entire wellbore, including the liner and casing
- The downhole temperature was 640°F

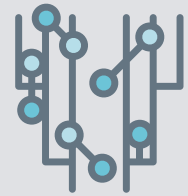
### Expro Excellence

- Expro is the market leader for the provision of Geothermal Multi-Finger Calipers and associated expertise
- The Expro solution meant the customer did not have to "quench" the well in order to log it
- The Kinley Multi-Finger Caliper and subsequent analysis successfully provided a "snapshot" of the condition of the wellbore, costing the client only hours of shut-in time to log the well
- Expro provided the Caliper and technician and partnered with a local conveyance company to expedite logistics and minimize costs

### Value to the client

- The customer was able to identify casing degradation before it became a serious production issue
- The Kinley Caliper was the most operationally efficient way for the customer to proactively identify the corrosion and extent of the scale build-up
- The Customer was then able to implement a solution to remediate the scale build-up and maintain production

#### Well integrity



#### Insight

