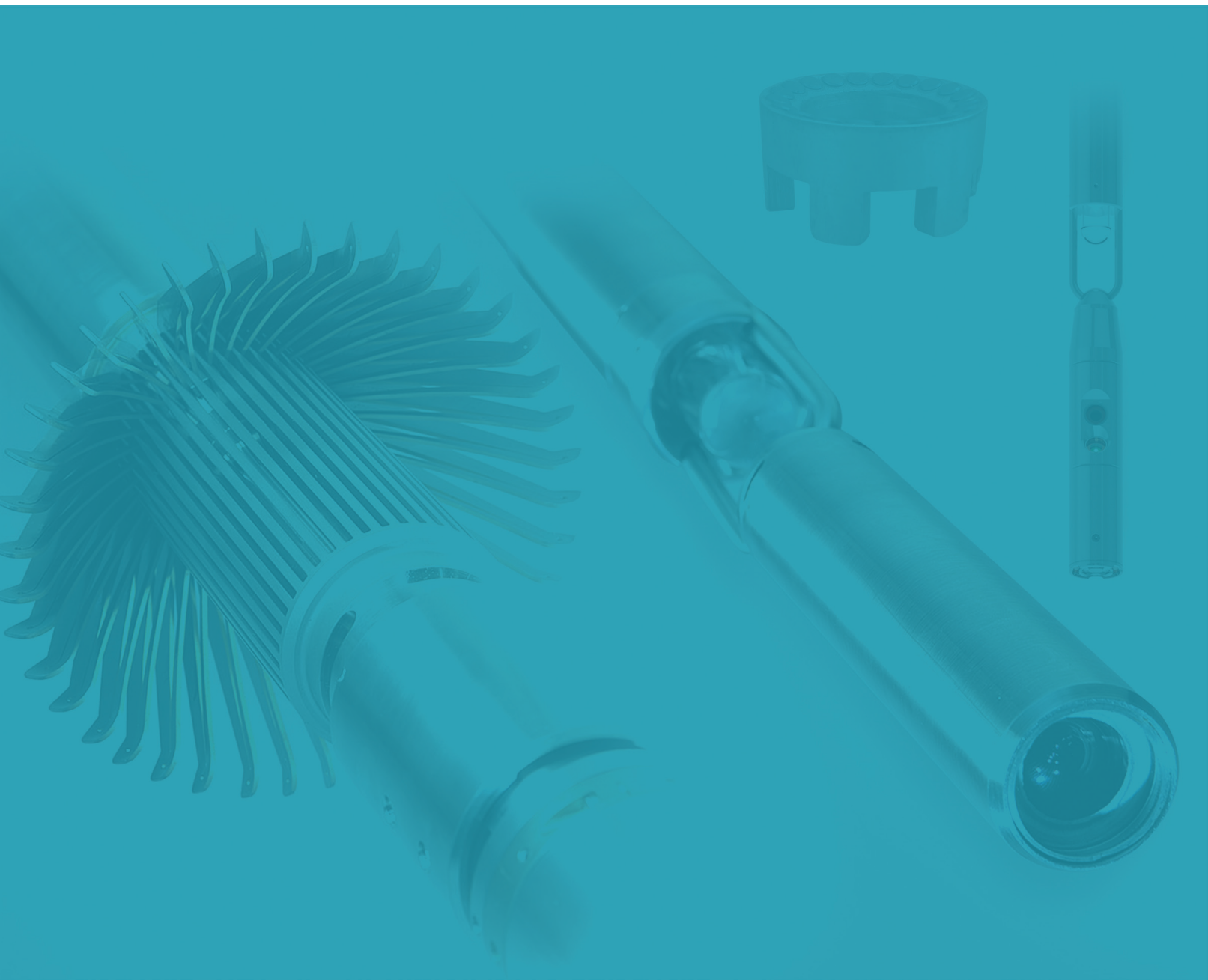




EXPRO



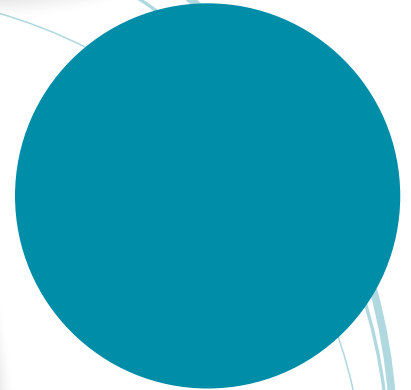
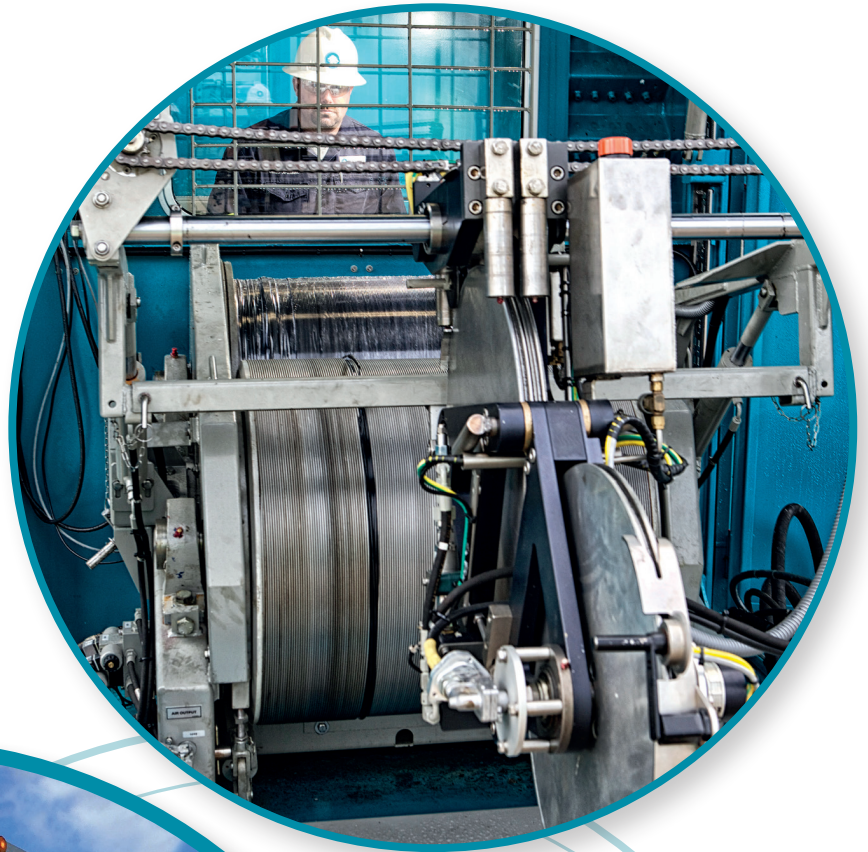
DOWNHOLE VIDEO (DHSV)

Expro is a key provider of reliable downhole video technology to the oil and gas industry, providing our clients with clear answers in the toughest environments.

With the capability to provide services over a wide-range of wells, both on **land and offshore**, Expro can provide rigless intervention with our core mechanical or e-line methods, as well as coiled tubing, to optimise production monitoring.

Expro can support throughout the entire well lifecycle, from initial design through to eventual abandonment:

- Downhole video monitoring
- Well integrity monitoring
- Production monitoring
- Production optimisation
- Well abandonment

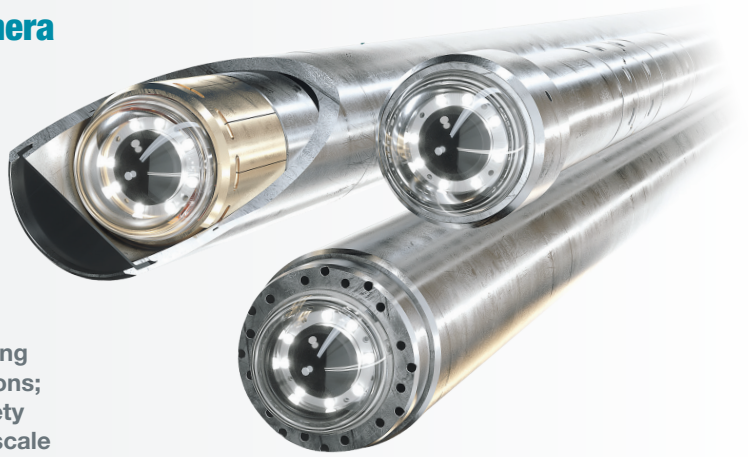


Downhole video cameras

Vision iO WellCAM® digital downhole camera

The Vision iO WellCAM® digital downhole camera solution can be run on all types of conveyances, up to 15,000 psi and 125°C/257°F, using only one camera string to visually log the whole well in one seamless high resolution image. Combined with the unique WellViewer™ software, it is possible to pan and tilt 360° horizontally and 180° vertically, with complete side and downhole viewing on one platform.

Typical applications include: fishing operations; identifying casing damages, deformations, parted tubing, perforations; assessing the condition of gas lift valves, downhole safety valves and flappers; oil, gas and water entry detection; scale build-up; monitor milling progress.



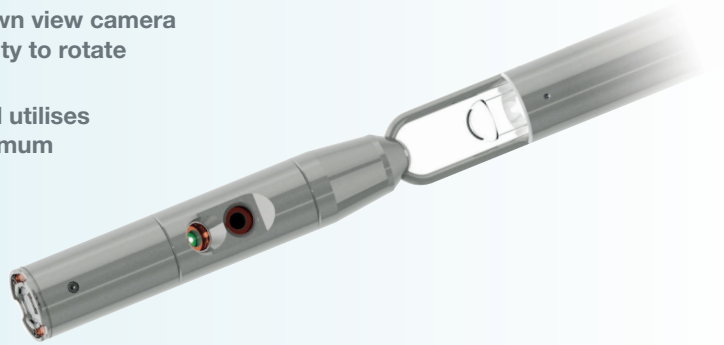
DHV ViewMAX Lite™ camera

DHV ViewMAX Lite™ is a slim, high pressure, side and down view camera with superior lighting and temperature rating, and the ability to rotate the camera to any required orientation.

The 1¹¹/₁₆" outer diameter is ideal for small bore wells and utilises a dedicated LED light and a halogen backlight to give optimum illumination.

A motor assembly in the tool string can be started and stopped from surface to rotate the view for optimum 360 degree inspection capability.

The camera requires only a single conductor to send power to the tool and receive pictures at surface. It can also be run on fibre optic units for full motion video capture. Pictures are viewed and stored up hole at up to 30 frames per second without a sacrifice of resolution.



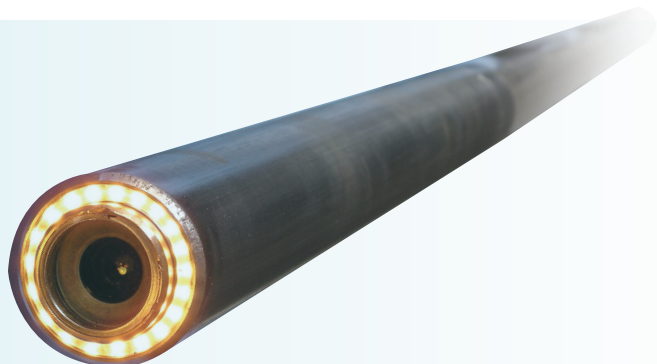
DHV high temperature camera

This highly portable camera system can be easily transported by pickup truck or helicopter to reach even the most remote locations. It can be deployed on virtually any conventional single and multi-conductor cable, and is capable of operating at up to 400°F.

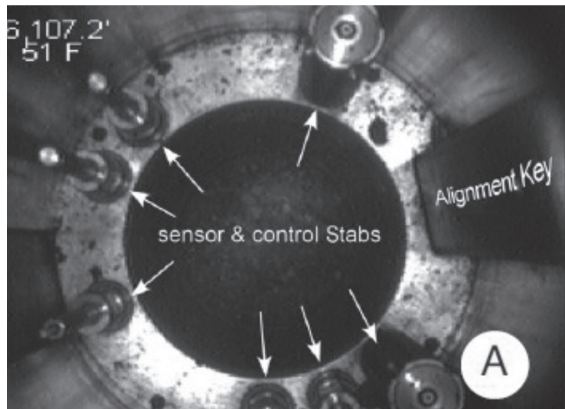


DHV memory camera

Expro's memory camera has the capability of recording up to 2,200 images with the ability to stop and start recording at pre-programmed times. It is ideal for viewing obstructions, restrictions, fish tops and casing damage. Other applications include mechanical inspections of wellbore hardware and monitoring wellbore corrosion and erosion. This camera has the ability to operate on slickline or coil tubing.



Camera applications



Inspection of control stabs in a tubing hanger prior to coupling



Gas lift mandrel inspection

Casing/well integrity monitoring

- Parted/split casing
- Casing collapse
- Leak detection
- Regulatory inspection

Casing/downhole inspection

- Casing condition
- Corrosion monitoring
- Sand/scale/mineral deposits
- Obstructions/restrictions
- Plugged perforations
- Perforated hole size measure
- Gas lift valves
- SCSSV valves

Operational verification

- Fishing aid
- Whipstock position
- Window cuts/mill
- Drilling lateral
- Liner top
- BOP rams

Production monitoring

- Fluid movement
- Fills
- Zonal/layer contribution
- Fracture identification

Fibre optic camera services

Fibre optic truck

Our fibre trucks have been specifically designed for video work giving the operator full control. This system is widely used to identify sources of water, gas, and hydrocarbons perf by perf under both static and flowing conditions.

This system features a high resolution live video output at 30 frames per second. This not only allows for a complete survey of a well for both casing or open hole conditions, but also for the purpose of fluid entry.

Our camera specialists have logged thousands of wells worldwide to provide an accurate visual analysis. We provide our customers with the confidence they need to remediate problem wells.

Our DHV camera systems are also compatible for electric line or memory application.



Combination services

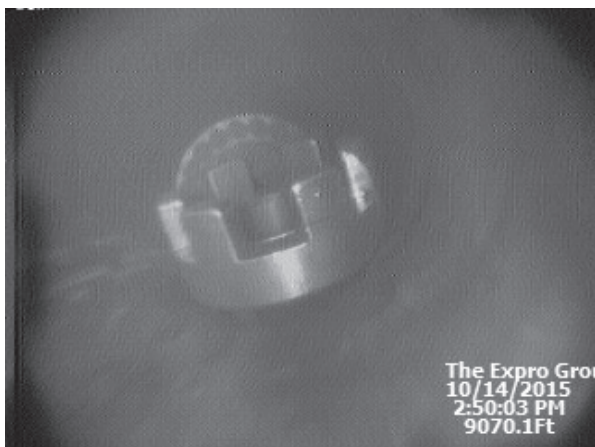
The Expro CalVid system combines the accuracy of an electronic multi-finger caliper with the visual images of a downhole video camera, resulting in a more accurate representation of wellbore conditions. The combined caliper and video string, CalVid, allows wellbores to be measured and visualised at the same time giving operators a complete understanding of the wellbore. Critical decisions regarding well and production integrity can then be made based on a complete and accurate assessment of the entire wellbore, minimising separate runs and rig time to aid in making critical path decisions.

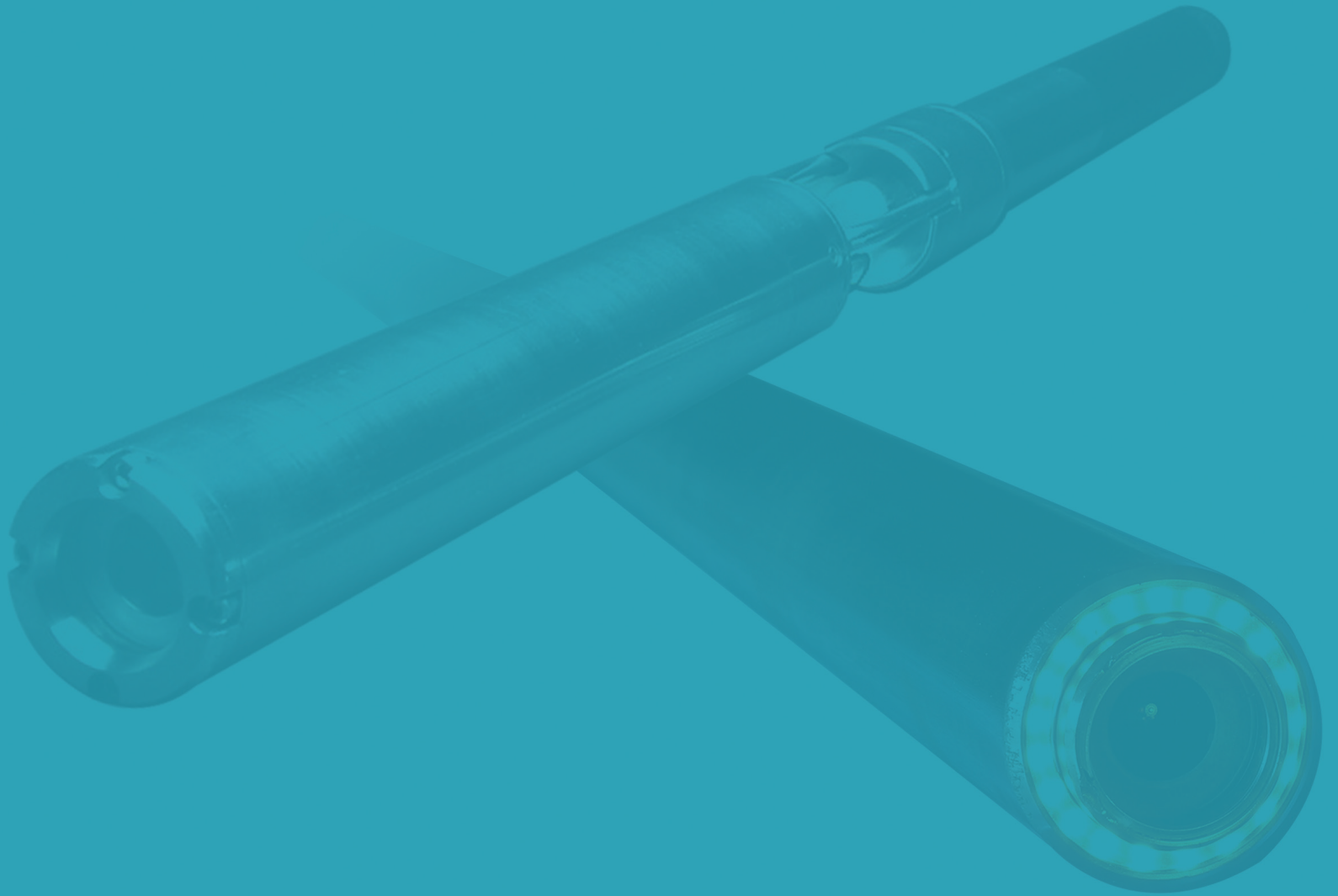


Fishing services

Fishing in real-time is also a common application, in both tubing and casing. Operators have endorsed Expro's camera system's ability to accurately evaluate obstructions in both horizontal and deviated fishing applications.

We will reduce downtime, reduce cost, and provide answers you can have confidence in, allowing you to make remediation decisions. Expro's camera systems have been deployed inside die collars, overshot, and other open-ended tools allowing them to be manipulated to retrieve a fish with less expense and downtime.





wellintervention@exprogroup.com

exprogroup.com/well-intervention